



20 Northwood Lane, Darley Dale, Derbyshire, DE4 2HQ

Saxton Mee



# 20 Northwood Lane

## Darley Dale

Offers In The Region Of

**£235,000**

This charming semi-detached home offers two spacious double bedrooms and the convenience of off road parking for two vehicles. Situated in the sought after residential area of Darley Dale, the property is within easy reach of a variety of shops, amenities, and public transport links, as well as being in the catchment area for highly regarded schools.

The location provides excellent access to nearby Bakewell and Matlock, where additional leisure facilities and amenities can be enjoyed, along with picturesque views of the surrounding Derbyshire countryside. Inside, the home boasts a light and airy atmosphere, featuring a well-equipped dining kitchen with a walk in pantry and a delightful sitting room.

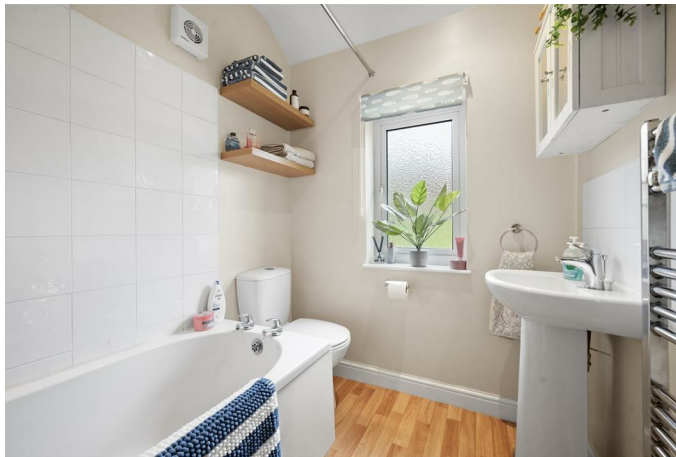
Upstairs, the first-floor landing leads to two generously sized double bedrooms and a modern bathroom.

Outside, the driveway ensures convenient off-road parking, while the rear garden is beautifully tiered, offering seating terraces, planted beds, and a timber storage shed, creating a wonderful outdoor space for relaxation and enjoyment.

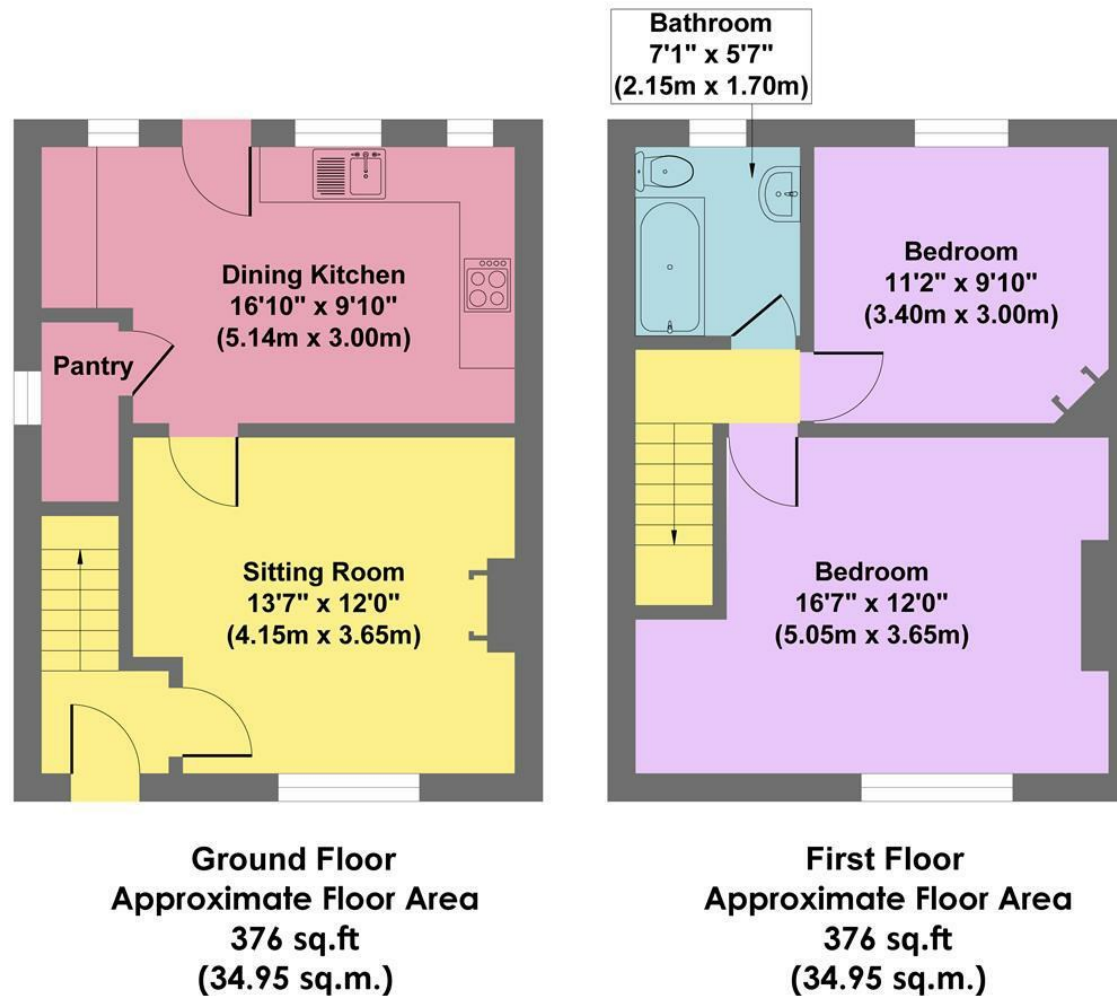
- Attractive Views
- Excellent Village Amenities
- Easy Reach Of Bakewell & Matlock
- Off Road Parking For Two Vehicles
- Within Highly Regarded School Catchment
- Easy Managed Rear Garden
- Direct Access To Many Local Walks
- Well Presented Throughout
- EPC: TBC
- Viewings: Bakewell Office







## 20 Northwood Lane



**Approx. Gross Internal Floor Area 752 sq.ft / 69.90 sq.m**

Illustration for identification puposes only ,measurements are approximate, not to scale

While we endeavour to make our sales particulars fair, accurate and reliable, they are only a general guide to the property and, accordingly, if there is any point, which is of particular importance to you, please contact the relevant office. The Agents have not tested any apparatus, equipment, fittings or services and so cannot verify they are in working order. The buyer is advised to obtain verification. Please note all the measurement details are approximate and should not be relied upon as exact. All plans, floor plans and maps are for guidance purposes only and are not to scale. Under no circumstances should they be relied upon as exact or for use in planning carpets and other such fixtures, fittings or furnishings. YOUR HOME IS AT RISK IF YOU DO NOT KEEP UP REPAYMENTS ON A MORTGAGE OR OTHER LOAN SECURED ON IT. 'A Life Assurance policy may be requested.' 'Written Quotations of credit terms available on request.'

Banner Cross  
T: 0114 268 3241  
E: [bannercross@saxtonmee.co.uk](mailto:bannercross@saxtonmee.co.uk)  
[www.saxtonmee.co.uk](http://www.saxtonmee.co.uk)

Hathersage  
T: 01433 650009  
E: [hathersage@saxtonmee.co.uk](mailto:hathersage@saxtonmee.co.uk)

Bakewell  
T: 01629 815307  
E: [bakewell@saxtonmee.co.uk](mailto:bakewell@saxtonmee.co.uk)

Matlock  
T: 01629 828250  
E: [matlock@saxtonmee.co.uk](mailto:matlock@saxtonmee.co.uk)

